

# Study Area: El Dorado County

# Map of El Dorado COunty



# Spatial Question

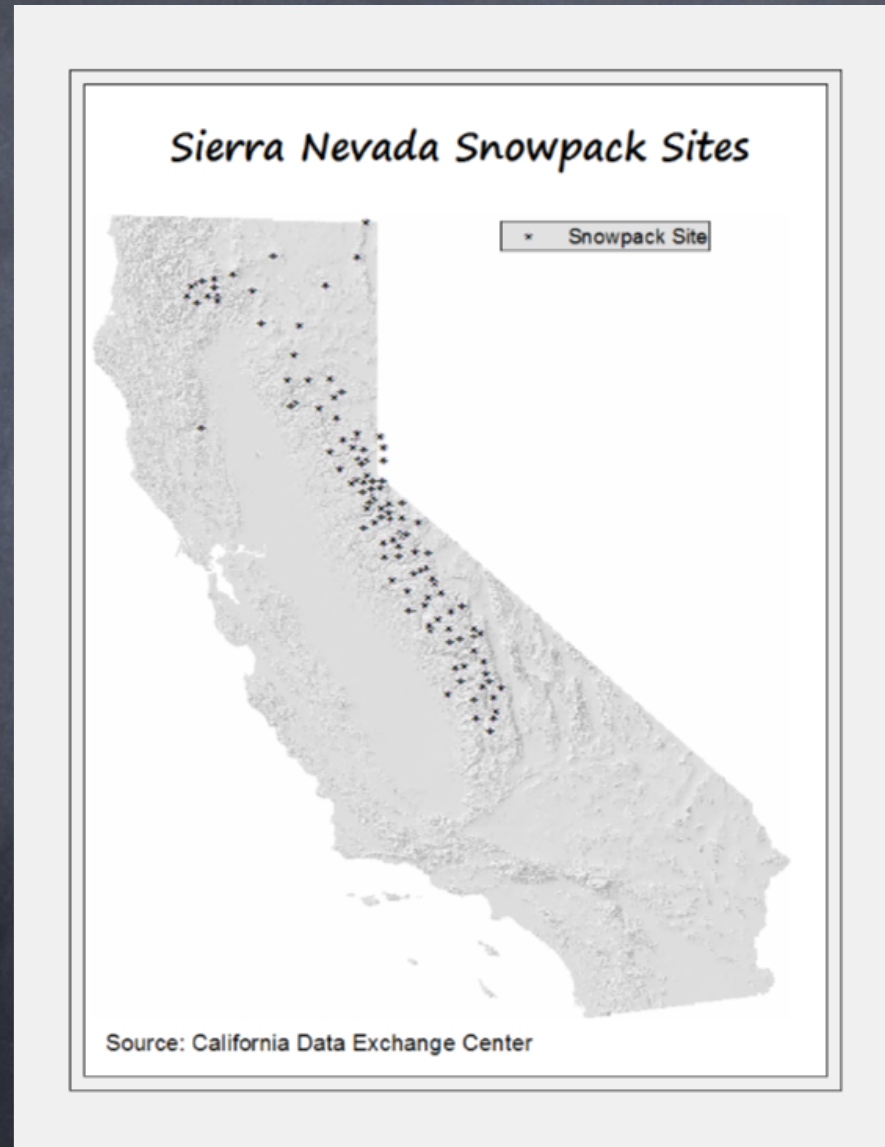
- Where are the suitable sites for a new Northern CA Reservoir to capture early snowmelt from the Sierra Nevada in El Dorado County?

# Methodology

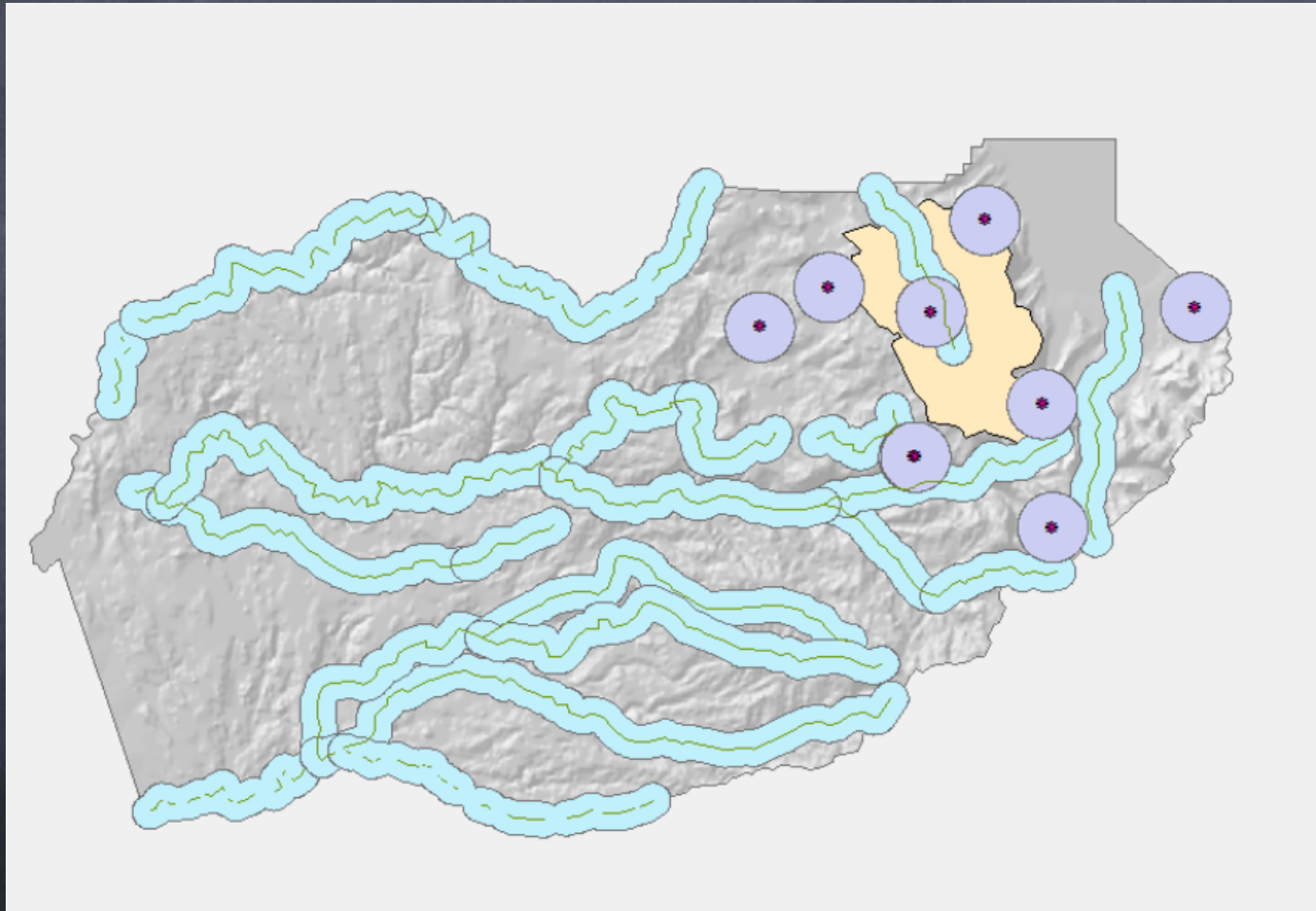
# Criteria for Suitability

- Should be within 2 miles of a Sierra snow pack site with high average snow depth.
- Should be on federal government land but exclude Wilderness lands.
- Should be within 1 mile of a river.
- Should be at 4000 ft. or higher elevation.
- Should be within El Dorado County.

# Snowpack Sites



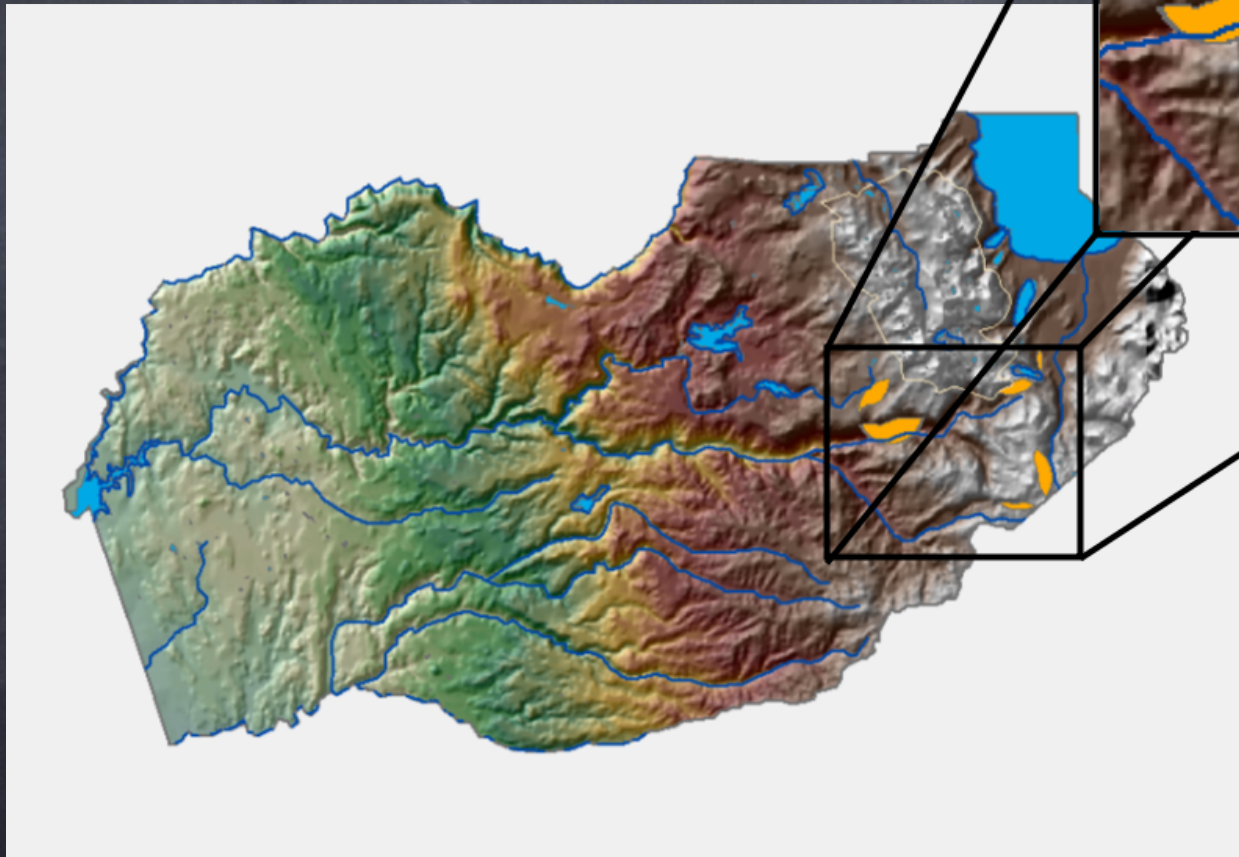
# Clipped county map of Buffered Rivers and Snowpack Sites



# Results



# Suitable sites for new reservoirs in



El Dorado  
County

# Data Sources

- The National Map Seamless Server <http://seamless.usgs.gov>
- California Data Exchange Center <http://cdec.water.ca.gov/>
- Cal-Atlas Geospatial Clearinghouse <http://www.atlas.ca.gov/download.html>
- Landsat.com site with links to El Dorado County census data [http://www.landsat.com/county/El\\_Dorado\\_County-CA.html](http://www.landsat.com/county/El_Dorado_County-CA.html)

# Potential Future Studies

- Endangered/threatened species analysis.
- Potential cistern storage of excess water from reservoir.
- Proximity to a south-facing mountain slope.